

ATTACHMENT B
Mechanical Sweepers

Commercial Cab-Chassis-Mount design

If you have different discounts for options, you WILL have to list the items. If you need more space, attach sheets or use Microsoft Excel.

BRAND	MODEL (Standard base unit)	Percentage off discount	BASE PRICE
		<u>3</u> %	Before Discount
Tymco	435		
	ISU 24 NQR Chassis		\$118,675 ⁰⁰
	OPTIONAL Chassis		
	Freightliner M2 106		
	Dual Steering Included		\$27,500 ⁰⁰
	In Up Charge		
	Freight		\$1950 ⁰⁰ Ea

Attachments/Accessories: 3 %

Options: 3 % Installation Charge: \$ In Base Hourly Labor Rate: \$ 140.00

Multiple Unit discount: 1 % (In addition to the equipment discount) based on 2 Units purchased

OEM Repair Parts: 0 % After Market Parts: 0 % Financing of Lease Purchase interest rate: Market Based

Extended Warranty offered? Yes X No If yes, please attach information for the extended warranty purchase. Discount offered N/A %

Vendors, please explain your ordering process in an attached document and any promotional events that might provide for a discount off the price listed.

*Note: Dual Steering available on Cab over
Call for Specifications*



435[®]
AIR SWEEPER

GENERAL SPECIFICATIONS



MODEL 435[®] REGENERATIVE AIR SWEEPER[®] TIER 4 INTERIM AUXILIARY ENGINE/CONVENTIONAL CAB CHASSIS

SWEPPER AUXILIARY ENGINE

Engine Kubota V2403-M-T, 4 cyl. (Tier 4i)
Displacement..... 148.5 in³ (2.4 L)
Power..... 56 hp (41.7 kW) @ 2600 RPM
Net torque..... 121 lb-ft (164 Nm) @ 1800 RPM
Air cleaner Heavy duty, w/pre-cleaner
Oil filter Spin on, full flow
Cooling Liquid
Diesel auxiliary engine fuel tank shared with chassis engine
Fuel tank capacity..... 52 gal (197 L)
Auxiliary engine shutdown system
Fuel/water separator

BLOWER, RUBBER LINED

Aluminum alloy, high volume, open face turbine
Purpose Creates air blast and suction
Bearings Anti-friction
Housing Abrasion resistant, replaceable liner
Drive Heavy duty power band

DUST SEPARATOR, RUBBER LINED

Type Cyclonic, multipass, centrifugal separation
Cylindrical area..... 20 x 22.5 in (508 x 1549 mm)
Location Adjacent to hopper
Particulate removal achieved through 22.5 in (572 mm) skimmer slot into skimmer hood
Inspection/cleanout port w/extended plug handle

HOPPER

Capacity (volumetric)..... 4.0 yd³ (3.06 m³)
Capacity (useable)..... 3.1 yd³ (2.37 m³)
Construction Welded steel plate
Dump door..... 74 x 81.25 in (1880 x 2064 mm)
Dumping method Hydraulic with tilt up
Dumping height 82.5 in (2095 mm)
Dump clearance height..... 165.5 in (4204 mm)
Dump door hydraulically opened/closed
Hopper screen lifts with door for easy cleaning
Abrasion protection package
Hopper drip edge extension

STORAGE COMPARTMENTS

Rear (2) Total of 26.6 ft³ (.075 m³) capacity
Front storage compartment not available

PICK-UP HEAD

Type Dual chamber
Function Delivers air blast and suction
Width (inside dimension) 78 in (1981 mm)
Head area..... 2028 in² (1.31 m²)
Suspension 4 springs, 2 drag links
Skids DUO-SKID[®], long life carbide
Suction hose diameter..... 12 in (305 mm)
Pressure hose diameter 12 in (305 mm)
Pressure bleeder Integral for leaf/light material pickup
Reverse pick-up head system

HYDRAULIC SYSTEM

Operates gutter brooms, dump door and pick-up head
Drive Gear driven from auxiliary engine
Capacity..... 5 GPM (18.925 LPM)
Reservoir 13.5 gal (51.1 L) w/80 mesh suction strainer, sight/temperature gauge
Filter..... 10 micron in-line
Hydraulic oil Extended life

GUTTER BROOMS, TWIN, Patented

Standard equipment includes floodlight and parabolic mirror
Drive Constant speed non-reversible hydraulic motor
Adjustment..... Adjustable for down pressure, pattern and wear
Down pressure Automatically adjusts to requirement
Flexibility All directions, Integral anti-damage "swing away" relief valve
Broom Steel wire vertical digger 36 in (914 mm)

DUST CONTROL SYSTEM

Water spray nozzles for dust suppression
Pump Electric diaphragm
Reservoir Polyethylene, 150 gal (567.7 L)
Filter..... 80 mesh in-line
Low water shut-off Safety shut-off with low water warning light in cab
Spray nozzles At gutter broom(s) and inside hopper
Fire hydrant and garden hose connections
Hydrant fill hose w/storage area..... 20 ft (6 m)

CONTROLS

Inside cab (lighted)
Pick-up head, gutter brooms, ignition and tachometer (auxiliary engine), voltmeter, low water warning system (for dust control system), all safety lights, hour meter, pressure bleeder, auxiliary fuse panel
Outside cab Dump

SAFETY/WARNING DEVICES

Alternating LED rear flashers (2)
Back-up alarm
Hopper safety prop

OPTIONAL EQUIPMENT

Air purge, dust control system
Auto Sweep Interrupt
Auxiliary hand hose 6 in dia. (152 mm)
Auxiliary hydraulic system
Camera/monitor system
Gutter broom tilt adjuster(s) (left, right, or twin)
Gutter broom variable speed
Gutter broom drop-down
High output water system
Hi/Low pressure washdown system
Hopper drain system
Hopper deluge system
Light bar, cab mounted, LED
Linear actuator - pressure bleeder with gauge
Low emissions package (required for South Coast AQMD Rule 1186, not applicable with high output water system)
Magnet front bumper mounted, light or standard duty
Pick-up head curtain lifter
Sound Reduction Engineering (SRE[®])
Stainless steel options:
Hopper:
Hopper weldment
Hopper door
Hopper screen
Inspection door
Skimmer hood
Suction inlet tube
Blower housing
Dust separator
Hopper drain
Hopper inspection door
Hopper screen
Auxiliary hand hose hardware
Washdown hose reel, 50 ft (15 m) retractable
Paint color (other than TYMCO standard white)

Special options are available for your individual requirements. Contact your local dealer or TYMCO.

**CONVENTIONAL CAB
CHASSIS AVAILABLE**
Freightliner M2-106



435[®]
AIR SWEEPER

GENERAL SPECIFICATIONS



MODEL 435[®] REGENERATIVE AIR SWEEPER[®] TIER 4 INTERIM AUXILIARY ENGINE/CABOVER CHASSIS

SWEPPER AUXILIARY ENGINE

Engine Kubota V2403-M-T, 4 cyl. (Tier 4i)
Displacement 148.5 in³ (2.4 L)
Power 56 hp (41.7 kW) @ 2600 RPM
Net torque 121 lb-ft (164 Nm) @ 1800 RPM
Air cleaner Heavy duty, w/pre-cleaner
Oil filter Spin on, full flow
Cooling Liquid
Diesel fuel supplied from chassis fuel tank
Fuel tank capacity 30 gal (113 L)
Auxiliary engine shutdown system
Fuel/water separator

BLOWER, RUBBER LINED

Aluminum alloy, high volume, open face turbine
Purpose Creates air blast and suction
Bearings Anti-friction
Housing Abrasion resistant, replaceable liner
Drive Heavy duty power band

DUST SEPARATOR, RUBBER LINED

Type Cyclonic, multipass, centrifugal separation
Cylindrical area 20 x 22.5 in (508 x 1549 mm)
Location Adjacent to hopper
Particulate removal achieved through 22.5 in (572 mm) skimmer slot into skimmer hood
Inspection/cleanout port w/extended plug handle

HOPPER

Capacity (volumetric) 4.0 yd³ (3.06 m³)
Capacity (useable) 3.1 yd³ (2.37 m³)
Construction Welded steel plate
Dump door 74 x 81.25 in (1880 x 2064 mm)
Dumping method Hydraulic with tilt up
Dumping height 72 in (1829 mm)
Dump clearance height 154 in (3912 mm)
Dump door hydraulically opened/closed
Hopper screen lifts with door for easy cleaning
Abrasion protection package
Hopper drip edge extension

STORAGE COMPARTMENTS

Front 55 ft³ (1.5 m³) capacity
Rear (2) Total of 26.6 ft³ (0.64 m³) capacity

PICK-UP HEAD

Type Dual chamber
Function Delivers air blast and suction
Width (inside dimension) 78 in (1981 mm)
Head area 2028 in² (1.31 m²)
Suspension 4 springs, 2 drag links
Skids DUO-SKID[®], long life carbide
Suction hose diameter 12 in (305 mm)
Pressure hose diameter 12 in (305 mm)
Pressure bleeder Integral for leaf/light material pickup
Reverse pick-up head system

HYDRAULIC SYSTEM

Operates gutter broom(s), dump door and pick-up head
Drive Gear driven from auxiliary engine
Capacity 5 GPM (18.925 LPM)
Reservoir 13.5 gal (51.1 L) w/80 mesh suction strainer, sight/temperature gauge
Filter 10 micron in-line
Hydraulic oil Extended life

GUTTER BROOM, LEFT, Patented

Standard equipment includes floodlight and parabolic mirror
Drive Constant speed non-reversible hydraulic motor
Adjustment Adjustable for down pressure, pattern and wear
Down pressure Automatically adjusts to requirement
Flexibility All directions, Integral anti-damage "swing away" relief valve
Broom Steel wire vertical digger 36 in (914 mm)

DUST CONTROL SYSTEM

Water spray nozzles for dust suppression
Pump Electric diaphragm
Reservoir Polyethylene, 150 gal (567.7 L)
Filter 80 mesh in-line
Low water shut-off Safety shut-off with low water warning light in cab
Spray nozzles At gutter broom(s) and inside hopper
Fire hydrant and garden hose connections
Hydrant fill hose 20 ft (6 m)

CONTROLS

Inside cab (lighted)
Pick-up head, gutter broom(s), ignition and tachometer (auxiliary engine), voltmeter, low water warning system (for dust control system), all safety lights, hour meter, pressure bleeder
Outside cab Dump

SAFETY/WARNING DEVICES

Alternating LED rear flashers (2)
Back-up alarm
Hopper safety prop

OPTIONAL EQUIPMENT

Air purge, dust control system
Auto Sweep Interrupt
Auxiliary fuse panel
Auxiliary hand hose 6 in dia. (152 mm)
Auxiliary hydraulic system
Cabover dual steering
Camera/monitor system
COMDEX package Up to 145 gal (549 L)
Requires Isuzu NPR-XD 132.5 in wheelbase
Gutter broom(s) (right or twin)
Gutter broom tilt adjuster(s) (left, right, or twin)
Gutter broom variable speed
Gutter broom drop-down
High output water system
Hi/Low pressure washdown system
Hopper drain system
Hopper deluge system
Light bar, cab mounted, LED
Linear actuator - pressure bleeder with gauge
Low emissions package (required for South Coast AQMD Rule 1186, not applicable with high output water system)
Magnet, front bumper mounted, light duty
Pick-up head curtain lifter
Sound Reduction Engineering (SRE[®])
Stainless steel options:
Hopper:
Hopper weldment
Hopper door
Hopper screen
Inspection door
Skimmer hood
Suction inlet tube
Blower housing
Dust separator
Hopper drain
Hopper inspection door
Hopper screen
Auxiliary hand hose hardware
Washdown hose reel, 50 ft (15 m) retractable
Paint color (other than TYMCO standard white)

Special options are available for your individual requirements. Contact your local dealer or TYMCO.

CABOVER CHASSIS AVAILABLE

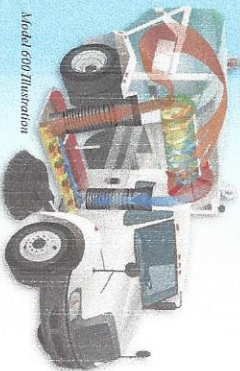
Isuzu NQR
Isuzu NPR-XD

Superior Training from TYMCO

We want you to understand the Regenerative Air System and your TYMCO Sweeper completely, so you can get optimal performance from your equipment investment. That's why, for more than thirty years, we've offered two-day scheduled training schools at our facility in Waco, Texas. Managers, owners, operators and mechanics get hands-on training and answers to specific questions. Enrollment levels are kept low, so you and your team will get personal attention as well as the opportunity to learn from the experiences of other attendees through the interaction of the class.

When your operators and mechanics are thoroughly trained and knowledgeable about the TYMCO Sweeper, you get better performance and a lower cost per operating hour.

- TYMCO offers full two-day schools
- Choose from over 30 schools scheduled per year
- Yearly class schedules and class agendas are available
- Learn through demonstrations on an operational sweeper
- Special schools arranged for large groups
- Register to attend on tymco.com



Model 400 Illustration

Specifically designed for training, our 3500 square foot, temperature controlled facility provides ample space for demonstrations on an operational sweeper and systems components. We also provide daily ground transportation from the hotel to our training facility, and lunch is on us.

Convenient Dealer Service Centers

In over 50 U.S. locations and dozens of others worldwide, you receive on-the-spot parts and service from TYMCO's network of dealers.



This product is protected by numerous U.S. and Foreign Patents.

Specifications subject to change without notice.



MODEL HSP®
High Speed System for Airport Runways



MODEL 600® CNG
Compressed Natural Gas Powered



MODEL DST-6®
Dual Drive Sweeping Technology



MODEL 210®
Patented Low Sweeper



MODEL 500®
High Speed Sweeper



MODEL DST-4®
Dual Drive Sweeping Technology



MODEL 210®
Patented Low Sweeper

813 • 10K • 01SM © TYMCO, Inc. 2013

TYMCO REGENERATIVE AIR SWEEPERS are South Coast AQMD Rule 1186 PM₁₀ Certified

TYMCO, Inc. • P.O. Box 2368 • Waco, TX 76703-2368 • (254) 799-5546 • FAX (254) 799-2722



TYMCO®
REGENERATIVE AIR SWEEPERS
Model 435®



Regenerative Air Sweeper

MADE IN WACO, TEXAS **USA**

From The People Who **Invented** Regenerative Air Sweeping!

- **Superior Performance**
- **Ease of Maintenance**
- **TYMCO Reliability**
- **Maneuverability**
- **Operability**

Large 4.0 cubic yard heavy duty, steel hopper increases sweeping time.

Patented centrifugal dust separator keeps fines and dust inside the hopper without exhausting air back into the atmosphere. There are no filters or baffles to replace. Accessible handle makes opening the cleanout port during washout quick and easy.

Powerful 56 HP auxiliary engine.

Model 435 Conventional Truck Package

- 8000 lb. payload
- 132 inch overall sweeping path.
- 81 inch dump height.
- Adjustable high back air suspension seats, heated power mirrors, dual tilt steering with instrument panels and controls.

Model 435[®] can be mounted on cabover or conventional cdb chassis.

72 inch dump height enables dumping into various sized containers.

Heavy duty hydraulic dump cylinders for high dumping heavy loads.

Streamlined side panels swing open for easy access to auxiliary engine.

Front and rear locking storage areas give you a combined 80 cubic feet of protected space.

Time-tested, heavy duty pick-up head propels a controlled jet of air through the blast orifice creating maximum pressure and powerful suction across the entire width of the pick-up head.

130 gallon water capacity for dust control.

Patented TYMCO gutter broom(s) — with steel diggers or poly diggers — provides more cleaning power with less maintenance.

Heavy duty Isuzu NQR 17,950 lb. GVW cabover chassis. (Can be equipped with optional dual steering for right curb view).

Floodlight and parabolic mirror.



Extra large door allows for easy dumping and cleaning.

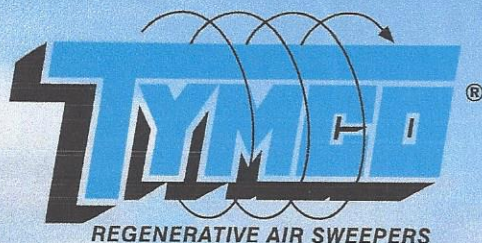


Convenient in-cab, operator friendly, sweeper controls. Gauges and controls are illuminated for better night visibility.

TYMCO Regenerative Air Cleans Deeper™

Sweeper photographs may contain optional equipment. Consult your dealer for more information.





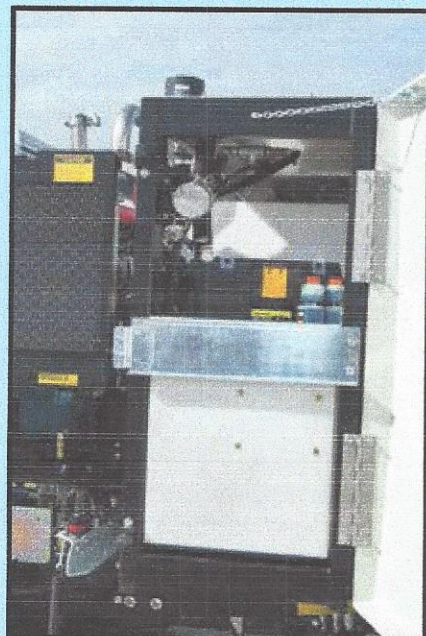
Model 435[®] COMDEX[®] AIR SWEEPER[®]



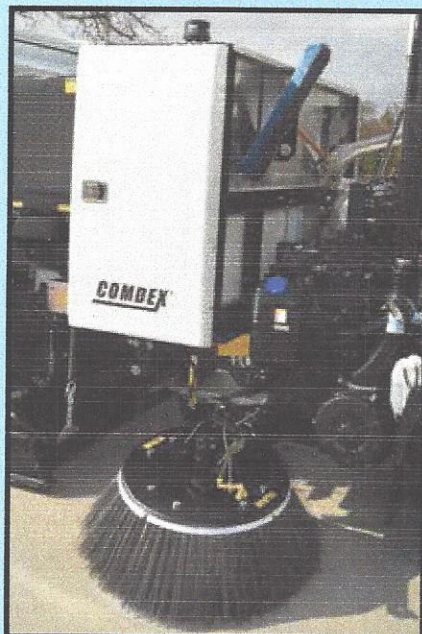
FROM THE PEOPLE WHO *INVENTED* REGENERATIVE AIR SWEEPING!

The Model 435 COMDEX[®] Package utilizes the short 132.5 inch wheelbase of the Isuzu NPR-XD chassis to provide storage, different water capacities and signage space for the customer. Acrylic capped ABS plastic doors on each side of the sweeper provide a lockable, covered storage area in addition to the tool rack on the front of the COMDEX module. All Model 435 COMDEX units include the left and right rear storage compartments.

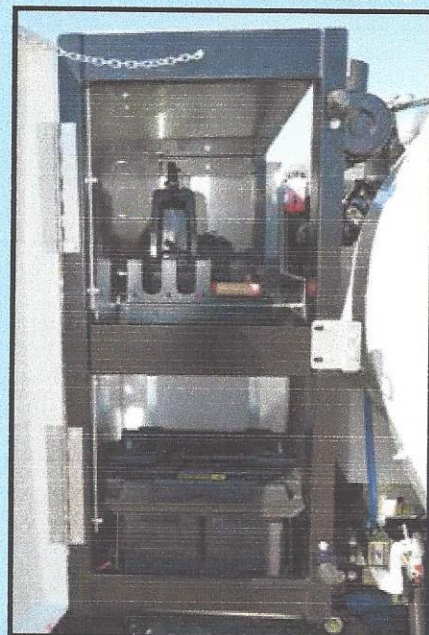
COMDEX[®] 145 Gallons



Front Tool Rack



COMDEX[®] 72.5 Gallons



1-800-258-9626

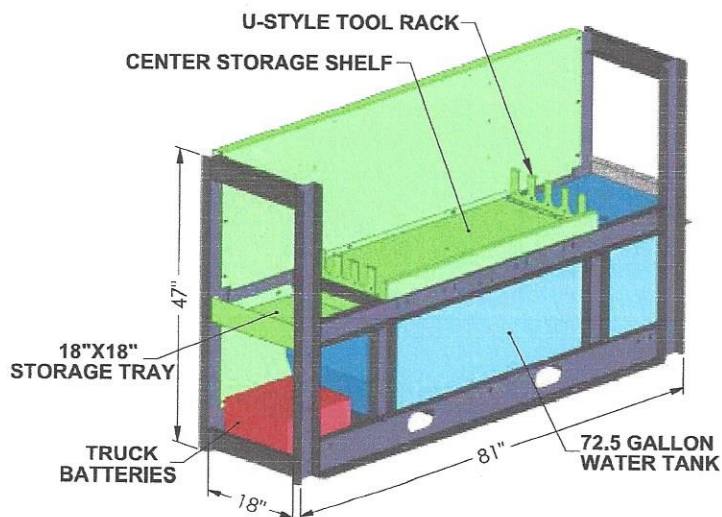
www.tymco.com

MADE IN WACO, TEXAS **USA**



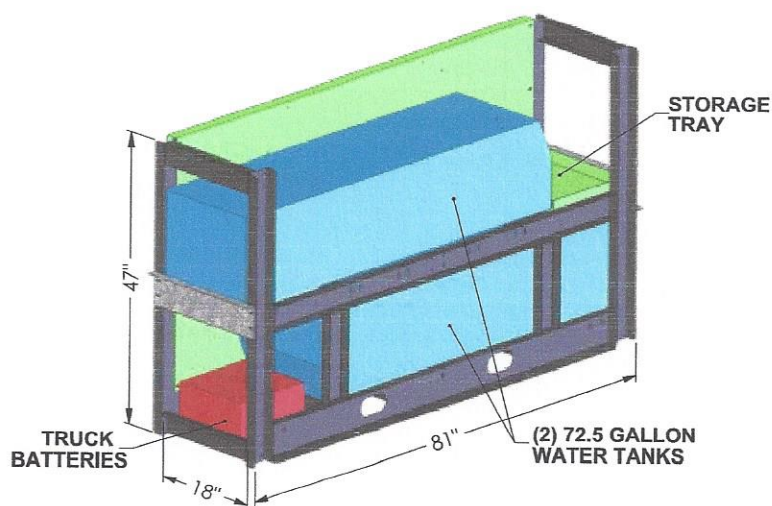
Sweeper photo may contain optional equipment. Specifications subject to change without notice. Consult factory.

COMDEX® with 72.5 Gallons Water



- Storage Area: Approx. 20 cubic feet
- Front Tool Rack Outside Module
- U-Style Storage Rack Inside Module
- Total Water Capacity: 72.5 Gallons

COMDEX® with 145 Gallons Water



- Storage Area: Approx. 4 cubic feet
- Front Tool Rack Outside Module
- Total Water Capacity: 145 Gallons

The 435 COMDEX® mounted on the Isuzu NPR-XD Chassis provides several benefits

- 132.5 inch wheelbase
- 16,000 lb. GVWR
- Tight turning diameters — 44 foot wall-to-wall / 38 foot 7 inch curb-to-curb turning diameter

0716 - 8M - 01SM - © TYMCO, Inc. 2016

Model 435

AIR SWEEPER

Conventional Truck Chassis



FROM THE PEOPLE WHO *INVENTED* REGENERATIVE AIR SWEEPING!

The Conventional Truck Package for the TYMCO® Model 435® based on the Freightliner® M2-106 brings all of the advantages of a conventional truck, while maintaining features existing TYMCO owners with cabover trucks expect.

- **Operator Friendly Ergonomics**
- **Excellent Gutter Broom Visibility**
- **Travels Up to Highway Speeds**
- **Easy Cab Accessibility and Engine Serviceability**
- **Excellent Turning Radius And Maneuverability**
- **150 Gallon Water Capacity Dust Control**
- **Dumps into Most 30 Yard Containers**



TYMCO Regenerative Air Cleans Deeper™

MADE IN WACO, TEXAS

USA



The Model 435 delivers street sweeping performance in a mid-sized package. With the Conventional Truck Package, the Model 435 has a payload of over 8000 lbs. and a overall sweeping path of 130 inches.



This package offers adjustable high back air suspension seats, heated power mirrors, as well as dual tilt steering wheels, illuminated instrument panels and controls among other great features.



With the Conventional Truck Package, the Model 435 has a 82.5 inch dump height. (Most 30 yard containers are approximately 69 inches)



1-800-258-9626
www.tymco.com

0117 - 5M - 01SM © TYMCO, Inc. 2017

TYMCO, Inc. • P.O. Box 2368 • Waco, TX 76703-2368 • (254) 799-5546 • FAX (254) 799-2722

Please Recycle 